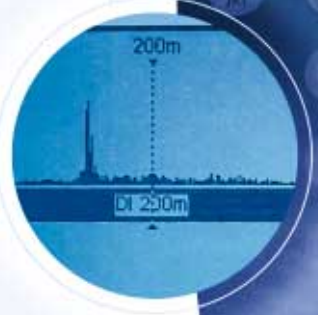


Eureka2



2/2R



Eureka2/2R

ENHANCED LEAK LOCATION SYSTEM

Eureka2 is an advanced system for the accurate pinpointing of underground fluid leaks, prior to excavation. The system has been proven to perform world-wide and can be used effectively on all types of pipe – not only metallic, but also plastic and asbestos cement.

Taking advantage of new technologies and innovative ideas, Primayer has made important enhancements to the well established Eureka leak noise correlator. The Eureka2 and Eureka2R models provide the definitive tools for routine leak location activities.

Despite its high level of sophisticated technology, Eureka2 is designed to be easy to use, extremely rugged, small and lightweight.

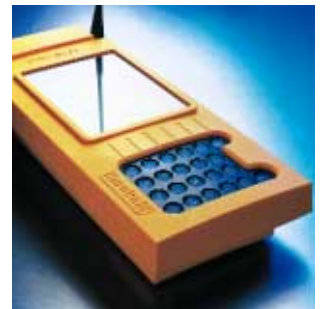


Benefits to Leakage Managers

- Fast and simple, enabling rapid leak location
- Optimum correlation performance
- Palm-top size and weight
- Rugged construction for routine operations
- The ideal tool for non-specialist and experienced users



The Eureka2 brings new levels of technical sophistication and style to leak location



The Eureka2R model, housed in a distinctive rugged yellow enclosure, combines advanced technology with toughness

Rugged models – Eureka2 and the extra tough Eureka2R

The Eureka2 processor unit is supplied in a standard enclosure; the Eureka2R processor has a special protective enclosure for much increased ruggedisation. Both models also feature rugged accelerometers with armoured cable and the complete system is housed in a robust transport case.

Leak noise sampling method uses 16-bit signal information for improved sensitivity

Optimum performance

Low frequency noise travels furthest through pressurised pipe systems. The Eureka2 design is optimised, from high sensitivity sensors, signal processing and filtering to process these low frequency signals. This, together with a 16-bit sampling method and use of DSP technology coupled with the power of a RISC processor, provides optimum correlation performance.

Palm-top size

The correlator size and weight are unique. Attention to the ergonomic design has resulted in a small, lightweight instrument that can be easily held in one hand.

As a simple and rugged performer – it's a tough act!



- | | | | |
|--|---|---|--|
| 1 Leak position | 4 Specialised functions controlled by 'soft' keys | 7 Battery level | 10 Correlation display directly proportional to distance on ground |
| 2 High definition, wide temperature, specification display | 5 Alpha-numeric keys | 8 Message area | 11 Radio signal strength indication |
| 3 Back-light for display and keys | 6 Enclosure weatherproof to IP65 | 9 Pipe model with pipe and sensor details | |

Fast-Track or Advanced operation

Eureka2 can be used in two modes – Fast-Track or Advanced. The Fast-Track mode can be used quickly and reliably, involving only three operations for basic leak pinpointing. The Advanced mode incorporates enhanced features such as unwanted noise suppression, velocity calculation, filter adjustment, display zoom and saving results.

The correlation display is shown directly as distance (unlike most correlators where a display of time-delay is used). This has the benefit, particularly in multiple pipe situations, of giving a displayed result directly proportional to distance on the ground.

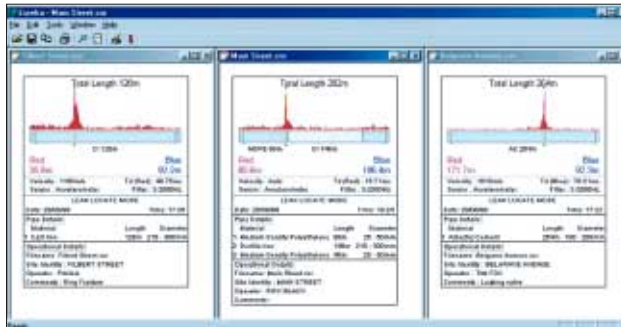
Features

- Automatic and manual filter selection
- Unwanted noise suppression
- Fast, automatic battery charging from mains or vehicle; minimises equipment down-time.
- Battery level and radio strength displays
- Built-in language options
- A4 print-out
- Software upgradeable

Fast-Track operation greatly reduces location time

PC software

The PC software package enables the user to save correlation files to the PC. This provides facilities to compare or re-examine correlation results, to print to any printer and to export to other Windows® programs. The software also allows the correlator default pipe settings and pipe velocity values to be adjusted.



Eureka2/2R

ENHANCED LEAK LOCATION SYSTEM



System components

- Eureka2 or Eureka2R processor unit
- Single or dual radio transmitters
- High sensitivity accelerometer sensor (pair)
- Headphones
- Automatic battery charger (mains and vehicle operation)

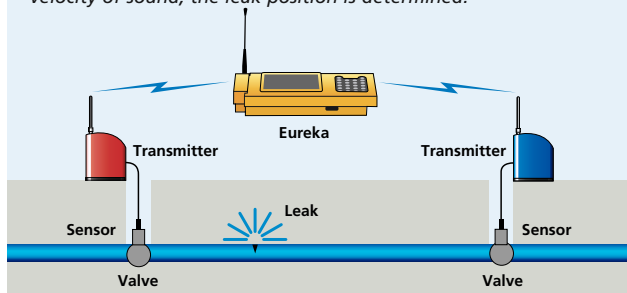
The perfect tool for non-specialists and more routine use by experienced practitioners

Optimising performance and investment

Operator confidence is essential in determining where to excavate for accurate leak location and subsequent repair. Eureka2 provides this confidence by virtue of its innovative design, simple operation, clarity of displayed information with, at the same time, sophisticated features. The result is optimum performance and return on investment.

Principle

Sensors are positioned either side of the suspected leak position and the time taken for the leak noise to reach respective sensors is measured. Upon entering the distance between sensors and the velocity of sound, the leak position is determined.



Primayer Limited reserves the right to change specifications without notice.

Optional components

- **Hydrophone sensor**
This makes direct contact with the water via hydrants or other available pipe-fittings. The low frequency response provides better leak detection in difficult situations.
- **Sensor extension cable**
- **Accelerometer grip attachment**
- **Eureka ground microphone**
Used for direct surface listening for leak noise. In this way the Eureka2 becomes two instruments in one.
- **Magnetic vehicle mount aerial**
- **Correlator reference unit**
This is a precise time-delay standard which checks leak position indication and sensitivity of the correlator. It provides maximum user confidence and a means to meet ISO commitments without correlator return-to-factory.
- **Portable (A4) printer**
- **Eureka to PC cable (for use with PC software)**
- **Rugged transport case (small)**
- **Rugged transport case (large)**
- **Measuring wheel**



Hydrophone sensor



Ground microphone



Correlator reference unit



Transport case